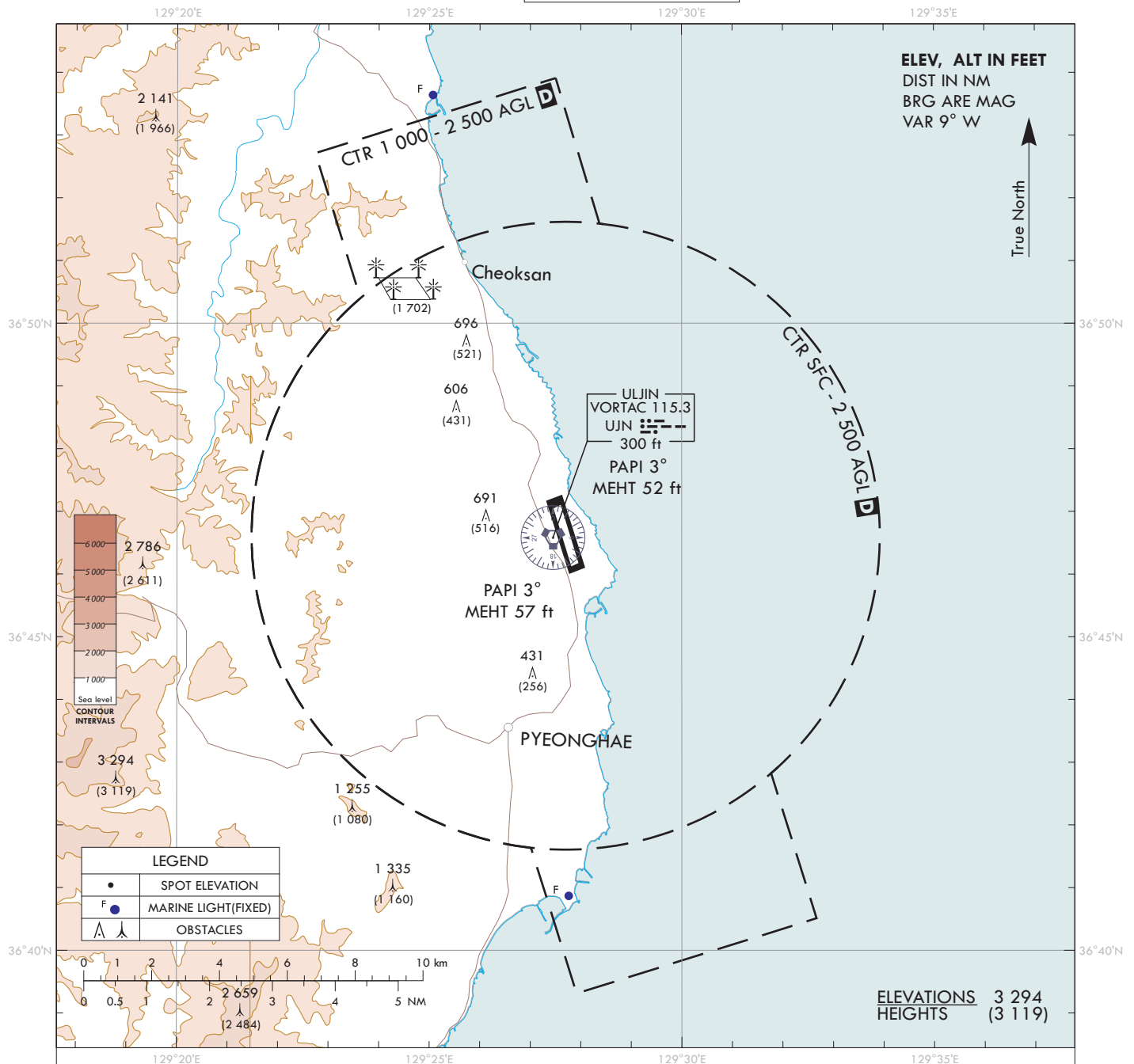


## VISUAL APPROACH CHART - ICAO

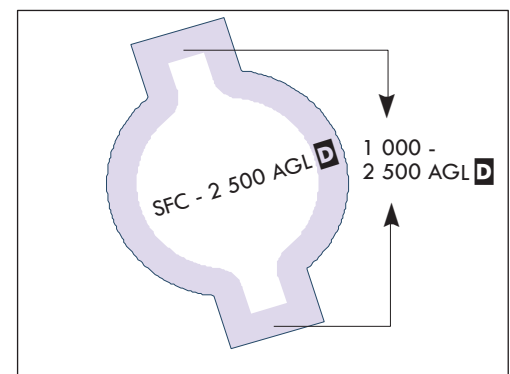
AD ELEV **175** ft  
HEIGHTS RELATED  
TO AD ELEV

ULJIN	ARR	120.875
		317.65
ULJIN	TWR	118.55

**ULJIN/Uljin**

## VISUAL APPROACH PROCEDURE

1. Visual approach may be initiated by ATC or approved upon pilot request on traffic permitting basis when :
  - a. Ceiling : At or above 500 ft plus MVA
  - b. Visibility : Not less than 5 km
2. ATS airspace : Class D (Refer to ENR 2.1-10)



Change : Page control.